

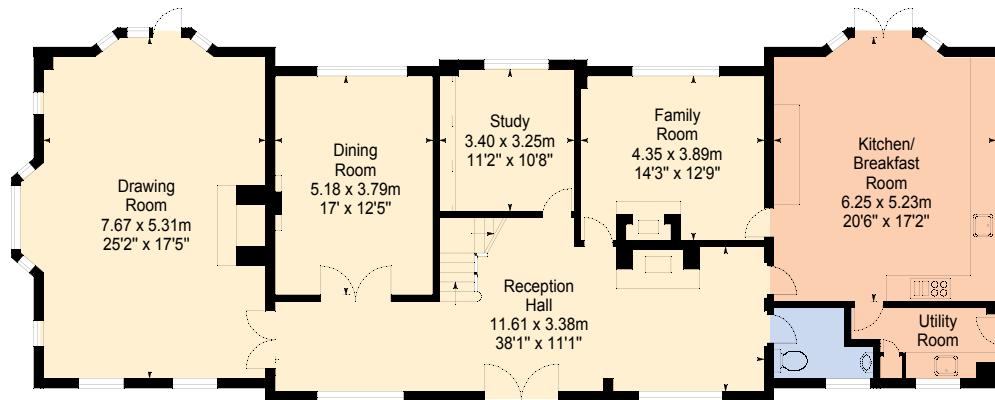
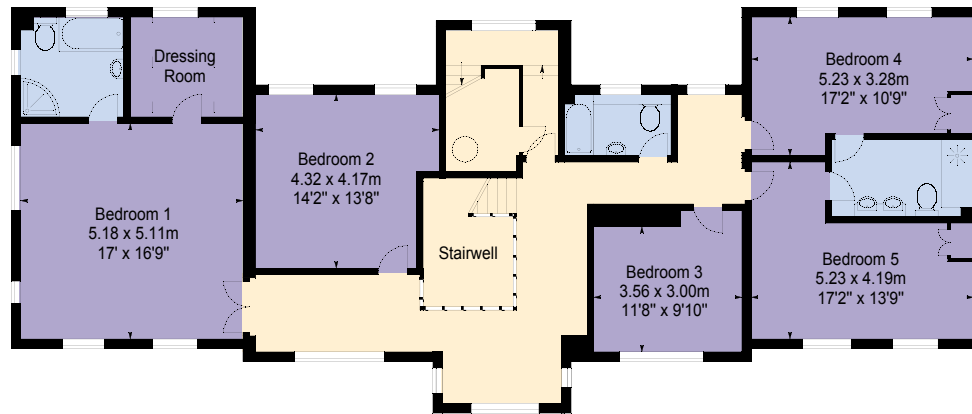
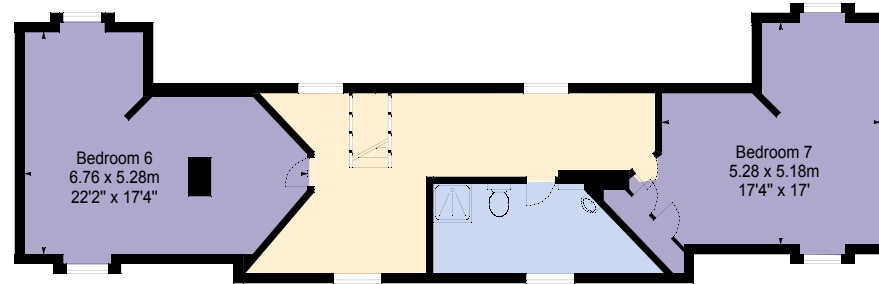
Westacre

16 Hids Copse Road, Cumnor Hill, Oxford, OX2 9JJ



Approx. Gross Internal Area

4,572 sq ft/424 sq m



- Reception
- Kitchen/Utility
- Bathroom
- Bedroom
- Storage
- Outside



GP Residential

All measurements are approximate and should not be relied upon as a statement of fact. This plan is for illustration purposes only. Not drawn to scale.